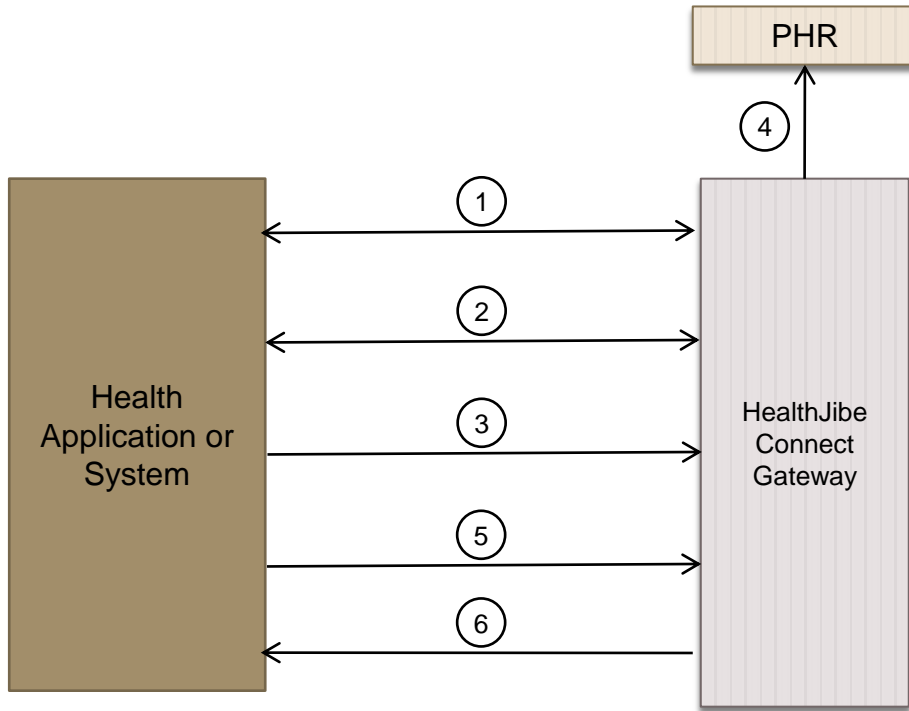


HealthJibe Connect Service Integration



1. App obtains access token for user via OAUTH
2. App redirects user to HealthJibe website to configure connection to a personal health record (PHR). User is returned to App after configuration.
3. App sends SOURCENOTIFICATION request containing a Continuity of Care (CCR) XML document to Gateway
4. Gateway forward personal health information (PHI) to personal health record (PHR)
5. App sends HMSREAD request to obtain PHI from the user's PHR.
6. Gateway sends PHI in CCR format in response to HMSREAD request